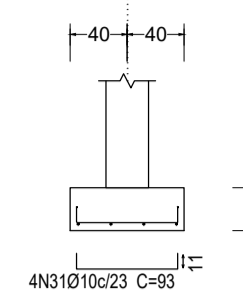
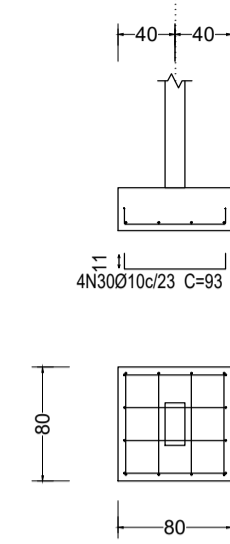


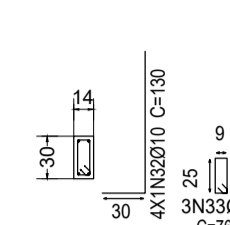
P8, P9, P10, P11, P12, P13, P14, P28, P78 e P83

(P8, P9, P10, P11, P12, P13, P14, P28, P78 e P83)

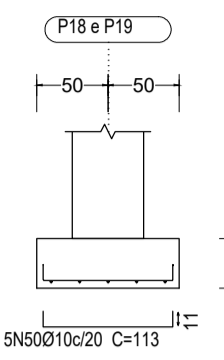
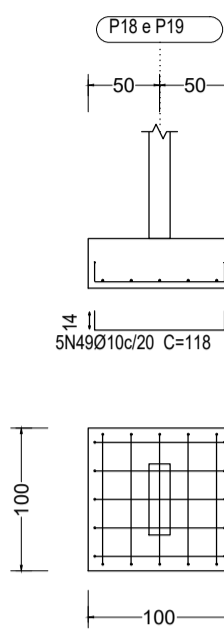
(P8, P9, P10, P11, P12, P13, P14, P28, P78 e P83)



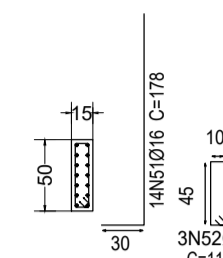
P8, P9, P10, P11, P12, P13, P14, P28, P78 e P83



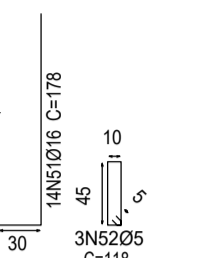
P18 e P19



P18 e P19

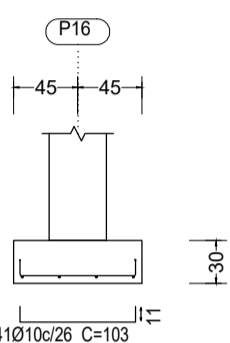
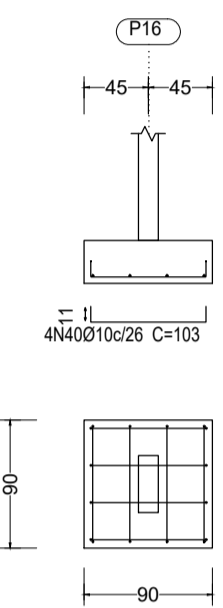


P18 e P19

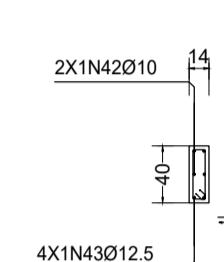


Resumo Aço Fundação			
Detalhamento fundação			
	Comp. total (m)	Peso (kg)	Total
CA-50	Ø6.3	3.1	1
	Ø10	1477.7	911
	Ø12.5	482.8	465
	Ø16	185.5	293
	Ø20	16.0	39
CA-60	Ø5	301.6	47
Total			1756

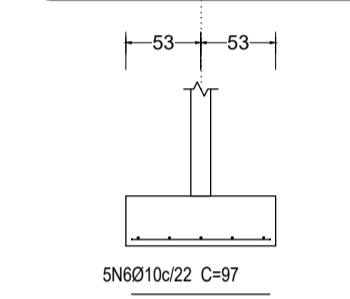
P16



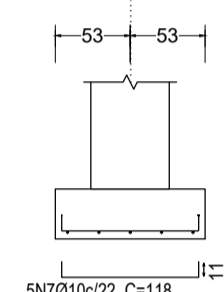
P16



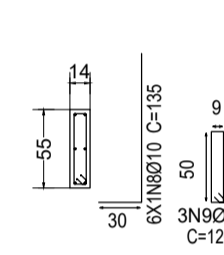
P22, P30, P35, P42, P49 e P56



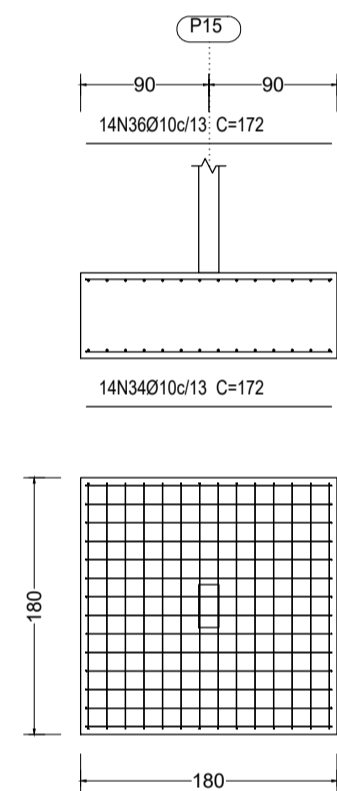
P22, P30, P35, P42, P49 e P56



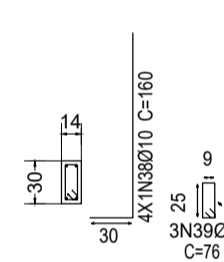
P22, P30, P35, P42, P49 e P56



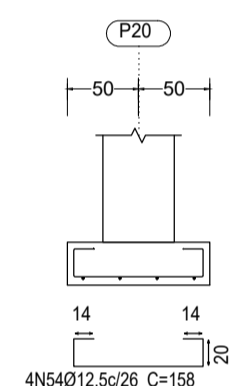
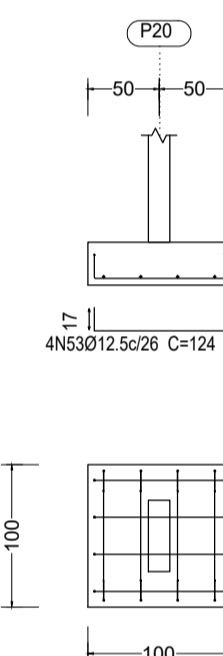
P15



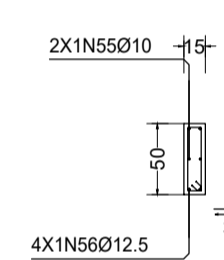
P15



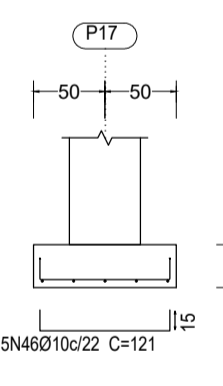
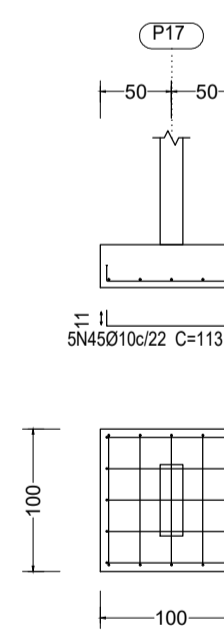
P20



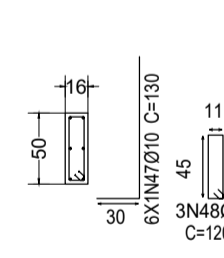
P20



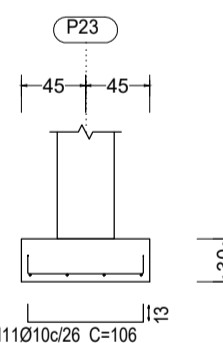
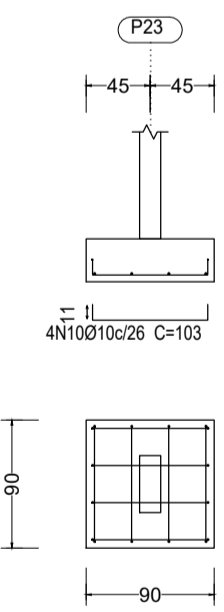
P17



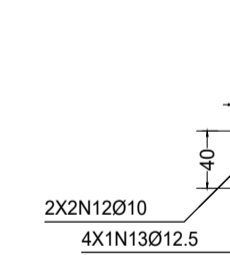
P17



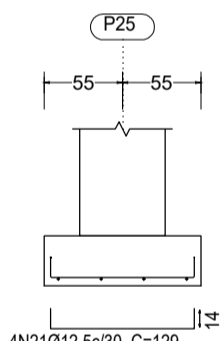
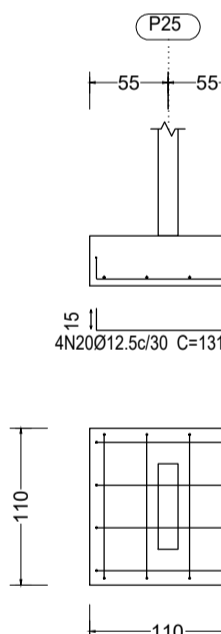
P23



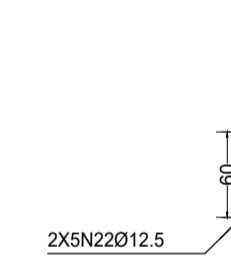
P23



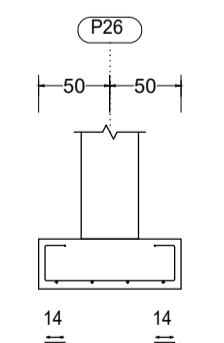
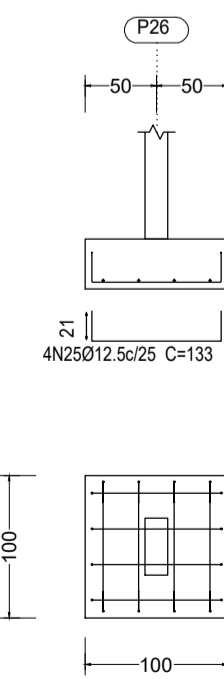
P25



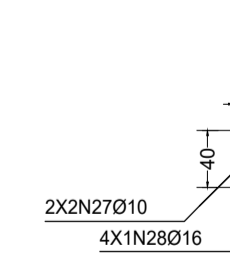
P25



P26



P26



Elemento	Pos.	Diam.	Q.	Dob. (cm)	Reta (cm)	Dob. (cm)	Comp. (cm)	Total (cm)	CA-50 (kg)	CA-60 (kg)	Elemento	Pos.	Diam.	Q.	Dob. (cm)	Reta (cm)	Dob. (cm)	Comp. (cm)	Total (cm)	CA-50 (kg)	CA-60 (kg)				
P21	1	Ø10	4	11	81	11	103	412	2.5		P8=P9=P10 P11=P12 P13=P14 P28=P78 P83	30	Ø10	4	11	71	11	93	372	2.3		Total: (x10): 78.0	0.4	4.0	
	2	Ø10	4	11	81	11	103	412	2.5			31	Ø10	4	11	71	11	93	372	2.3					
	3	Ø10	4	30	100			130	520	3.2			32	Ø10	4	30	100			130	520		3.2		
	4	Ø12.5	4	30	117			147	588	5.7			33	Ø5	3		76			76	228				
	5	Ø5	3			96		96	288			0.5													
Total:										13.9	0.5	Total:										78.0	4.0		
P22=P30 P35=P42 P49=P56	6	Ø10	5		97		97	485	3.0		P15	34	Ø10	14		172		172	2408	14.8		Total: (x10): 148.8	0.4		
	7	Ø10	5	11	96	11	118	590	3.6			35	Ø10	14		172		172	2408	14.8					
	8	Ø10	6	30	105			135	810	5.0			36	Ø10	14		172		172	2408	14.8				
	9	Ø5	3		126		126	378		0.6			37	Ø10	14		172		172	2408	14.8				
												0.6		38	Ø10	4	30	130		160	640		3.9		
Total:										11.6	0.6	Total:										63.1	0.4		
Total:										69.6	3.6	Total:										12.3	0.5		
P23	10	Ø10	4	11	81	11	103	412	2.5		P16	40	Ø10	4	11	81	11	103	412	2.5		Total: (x10): 25.5	0.5		
	11	Ø10	4	13	80	13	106	424	2.6			41	Ø10	4	11	81	11	103	412	2.5					
	12	Ø10	4	30	94			124	496	3.1			42	Ø10	2	30	100		130	260	1.6				
	13	Ø12.5	4	30	93			123	492	4.7			43	Ø12.5	4	30	117		147	588	5.7				
	14	Ø5	3		98		98	294		0.5			44	Ø5	3		96		96	288					
Total:										12.9	0.5	Total:										63.1	0.4		
Total:										12.9	0.5	Total:										12.3	0.5		
P24	15	Ø10	4	11	81	11	103	412	2.5		P17	45	Ø10	5	11	91	11	113	565	3.5		Total: (x6): 21.0	0.6		
	16	Ø10	4	13	80	13	106	424	2.6			46	Ø10	5	15	91	15	121	605	3.7					
	17	Ø10	4	30	94			124	496	3.1			47	Ø10	6	30	100		130	780	4.8				
	18	Ø12.5	4	30	93			123	492	4.7			48	Ø5	3		120		120	360					
	19	Ø5	3		98		98	294		0.5															
Total:										12.9	0.5	Total:										12.0	0.6		
Total:										12.9	0.5	Total:										12.0	0.6		
P25	20	Ø12.5	4	15	101	15	131	524	5.0		P18=P19	49	Ø10	5	14	90	14	118	590	3.6		Total: (x2): 7.2	0.6		
	21	Ø12.5	4	14	101	14	129	516	5.0			50	Ø10	5	11	91	11	113	565	3.5					
	22	Ø12.5	10	30	75		105	1050	10.1			51	Ø16	14	30	148		178	2492	39.3					
	23	Ø16	4	30	148		178	712	11.2			52	Ø5	3		118		118	354						
	24	Ø5	3		136		136	408		0.6															
Total:										31.3	0.6	Total:										46.4	0.6		
Total:										31.3	0.6	Total:										46.4	0.6		
P26	25	Ø12.5	4	21	91	21	133	532	5.1		P20	53	Ø12.5	4	17	90	17	124	496	4.8		Total: (x2): 10.0	0.0	13.5	
	26	Ø12.5	4	14	140	14	168	672	6.5			54	Ø12.5	4	14	130	14	158	632	6.1					
	27	Ø10	4	30	104		134	536	3.3			55	Ø10	2	30	99		129	258	1.6					
	28	Ø16	4	30	88		118	472	7.5			56	Ø12.5	4	30	70		100	400	3.9					
	29	Ø5	3		100		100	300		0.5			57	Ø5	3		118		118	354					
Total:										22.4	0.5	Total:										16.4	0.6		
Total:										22.4	0.5	Total:										16.4	0.6		

Ø5:	0.0	13.5
Ø10:	273.0	0.0
Ø12.5:	67.3	0.0
Ø16:	97.3	0.0
Total:	437.6	13.5

FUNDAÇÕES

ARCOVERDE - PE

ENDEREÇO: RUA EDILIO SIMÕES DA ROCHA, 53-85 - SÃO MIGUEL

PROPRIETÁRIO: SEÇÃO JUDICIÁRIA DE PERNAMBUCO

Autor do Projeto: Engrº Civil Lucio Castello Branco - CREA Nº 1.788 D/P1

Resp. Técnico:

Proprietário:

Autor do Projeto:

R.T. CREA Nº

CREA

FUNDAÇÕES EM SAPATAS

PRANCHA	EDIFÍCIO DE USO PÚBLICO - JUSTIÇA FEDERAL	TIPO
02/06	SAPATAS: DIMENSÕES E ARMADURAS	ESTR.
Data: Outubro/2022	Desenho: Lúcio	Escala: Indefinida